



Biddulph Town Council

ANNUAL REPORT



2021-22

Mayor's Review of the Town Council's year 2021-22

It has been my absolute pleasure to be Mayor during 2021-22. As the town emerged from the Covid-19 pandemic, it was fantastic to see our communities come back together and for some 'normality' to return. I love Biddulph and the people who live here; they have my undying respect. It has been a great privilege to show-off our fabulous town. I have been able to raise money for local charities this year; as part of this I completed an indoor skydive, afternoon tea, charity Civic Ball and Civic Sunday, and lots of raffles! It's certainly been a different year! My thanks to all who contributed.



Councillor Sylvia Rushton

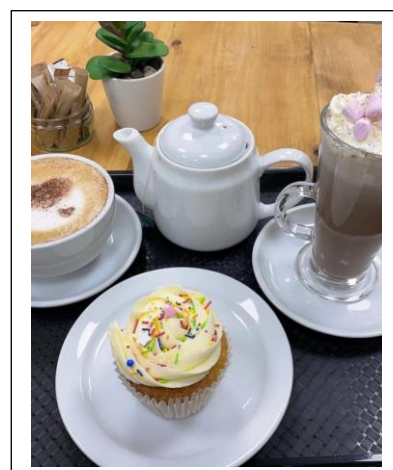


The work of the Town Council

By the end of 2021-22 it was starting to feel a bit more 'normal' after a number of challenges throughout the Covid-19 pandemic. Our community lost loved ones and people experienced difficulties with their finances, mental health and social isolation. We feel deeply honoured to have served this fantastic resilient community during a period when our people worked to support its neighbours, family and friends.

In 2021-22, there are some fantastic examples of **community activities and projects** that have emerged following a very dark time. The Town Council is proud of our achievements this year, and we are pleased to share these through the Annual Report.

2021-22 gave the Town Council the opportunity to establish new relationships and procedures with buildings that we took on in 2020. The **Hideaway Café** opened at the Visitor Centre at the Bidulph Grange Country Park. The Town Council invested in this building to ensure it was compliant and a pleasant environment for people visiting the Country Park.

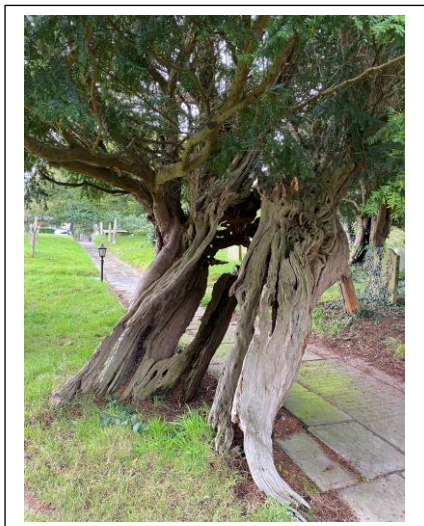


Halloween and Easter trails have encouraged new visitors to explore our beautiful outdoor spaces.

Our Environment and Climate Change Working Group has led the Town Council's activities in relation to the enhancement of our green spaces. We have **planted over 200 trees** in 2021-22.

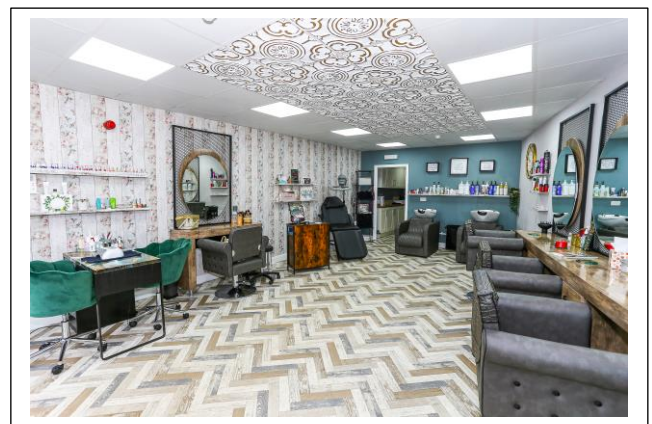


A group of volunteers completed training to identify **ancient and veteran trees**. We recognised that there are very few trees recorded using this criteria within the town and we committed to increasing this number in support of our work to promote and enhance the 'Garden Town of Staffordshire'.

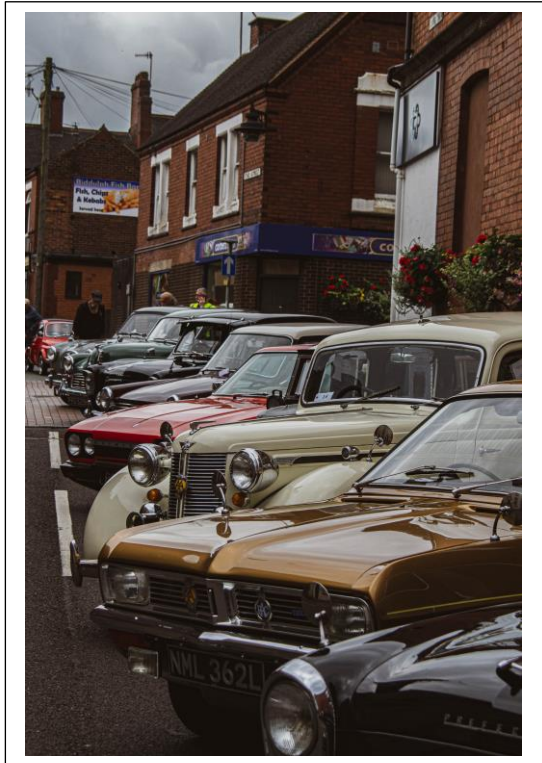


We were grateful to the government for **‘Welcome Back’** funding during 2021-22. The Town Council was encouraged to spend this on temporary enhancements that would attract people back into the town centre, assuring them that this is a safe place to be.

We worked with traders to promote their businesses with professional photographs and a ‘Love Your High Street’ programme; we cleaned the streets, enhanced planting and lighting and worked with young people to celebrate and promote Fairtrade Fortnight by creating displays within the Town Hall and Bus Hub.



During 2021-22 we were able to hold some of the **big events** that had been missing during the Covid-19 pandemic. The Classic Vehicle Show returned in September, bringing hundreds of people to the town centre.



In December, we were able to hold the **Christmas Lights** switch-on in Biddulph town centre and support the Biddulph Moor switch-on. We were also delighted to host a pantomime in the Town Hall, which was really well attended.



The Town Council has continued to support the **Dementia Friends** initiative. Officers within the Town Council were trained to deliver these sessions, and have now 'made' over 380 new Dementia Friends within our community, working with both Woodhouse Academy and Knypersley First School during 2021-22. We have also continued to hold the **Dementia Friendly Cinema**, which is a relaxed event every six weeks throughout the year.



In February 2022, we received funding from Western Power Distribution and Local Giving to support our community with fuel poverty issues. We created a selection of leaflets and useful information on the website to help people make positive changes within their homes. We also held an **Energy Costs Café** in March, which was attended by a range of partners.



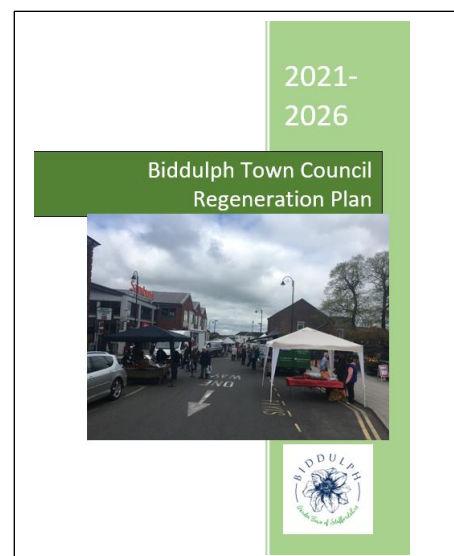
In 2019 we introduced **Tea with the Town Council**. We were glad to bring this back to the Town Hall in September 2021. This is an opportunity to meet Town Councillors, find out what projects we're working on and enjoy refreshments on us!



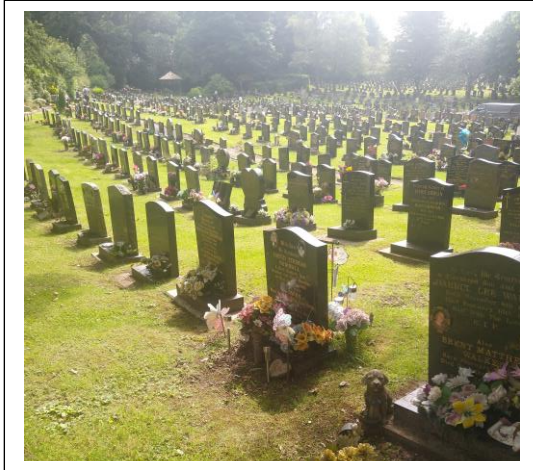
The Town Council is determined that the **Town Hall** should be at the heart of community. Throughout 2021-22 we have continued to complete redecoration and improvement projects. We have also produced a series of new pieces of literature that promote the activities that take place here and encourage tourism.

In 2021, we developed a **Regeneration Plan**. This document sets out our vision and priorities for the town and states:

Biddulph Town Council is proactive, innovative and aspirational, but we know our limitations. The Town Council is not a major land owner, nor do we have statutory powers that can enforce or implement certain improvements. However, the Town Council is a good partner. Funding is available for capital improvements; staff and Councillors have the energy and enthusiasm to complete 'leg work' within the town, to research issues and to canvas public opinion.



The Town Council is not responsible for roads, bins, housing or planning. We do run **two allotment sites, the Burial Grounds and fund the 93 D&G Bus**. During this year, we continued to ensure that these services were run effectively. The 93 Bus continued to run all year and we made the commitment to extend this funding for 2022-23.



We continue to expand the work we do, whilst ensuring that our core services continue.

We have some amazing **partners**, and we continued to develop these relationships throughout 2021-22. We offer monthly Police drop-ins at the Town Hall, you can bring Foodbank donations to the Town Hall and Staffordshire Sight Loss Association now offer drop-in support sessions. We work closely with Support Staffordshire to host the **Biddulph Community Officer** who supports our crucial community groups.



Each year, the Town Council allocates £74,000 to support local groups through a **grants scheme**. Groups apply for anything from £100 to £25,000 and we are delighted to support their activities.



In 2022-23, we aspire to adopt the Neighbourhood Plan and Neighbourhood Development Order, following a referendum. We want to consult on new ideas for the development of the High Street and the area in front of the Town Hall. We will also continue to work with our town centre traders through a new Traders Forum and host lots more events!

BALANCE SHEET AT 31 MARCH 2022 (UNAUDITED)

31st March 2021		31st March 2022	
	Current Assets		
93,661	Debtors	37,743	
4,845	VAT Control A/c	6,573	
0	Prepayments	3,601	
356,810	Current Bank A/c	455,555	
0	Sum Up	30	
60	Petty Cash	60	
4,275	Mayors Charity Account	5,304	
304,741	CCLA	304,953	
764,391			813,818
764,391	Total Assets		813,818
	Current Liabilities		
11,966	Creditors	19,416	
1,302	Accruals	286	
0	Mayors Charity	5,304	
0	Receipts in Advance	1,074	
13,269			26,080
751,122	Total Assets Less Current Liabilities		787,737
	Represented By		
271,987	General Reserves		336,693
479,135	Earmarked Reserves		451,044
751,122			787,737

INCOME AND EXPENDITURE ACCOUNT AT 31 MARCH 2022 (UNAUDITED)

31st March 2021		31st March 2022
	Operating Income	
364,629	General Administration	393,037
4,225	Town and Community	3,950
807	Grants	261
63,620	Burial Grounds	59,522
858	Allotments	934
16,078	Green Spaces	0
8,106	Mayor	0
97,173	Town Hall	200,292
<u>555,496</u>	Total Income	<u>657,995</u>
	Running Costs	
238,368	General Administration	286,049
100,165	Town and Community	108,104
78,724	Grants	71,375
25,186	Burial Grounds	26,395
691	Allotments	640
5,690	Lengthsman	3,819
564	Green Spaces	6,666
3,103	Planning	3,854
4,750	Neighbourhood Plan	1,050
4,275	Mayor	0
36,599	Town Hall	83,189
8,604	Country Park	30,239
<u>506,718</u>	Total Expenditure	<u>621,379</u>
	General Fund Analysis	
211,949	Opening Balance	271,987
555,496	Plus : Income for Year	657,995
<u>767,444</u>		<u>929,982</u>
506,718	Less : Expenditure for Year	621,379
<u>260,726</u>		<u>308,603</u>
(11,261)	Transfers TO / FROM Reserves	(28,091)
<u>271,987</u>	Closing Balance	<u>336,693</u>

BIDDULPH TOWN COUNCILLORS

Councillor	Address	Tel	Email	Ward
GS ADAMS	17 Marsh Green Road ST8 6QP	01782 517961		North
EE BADDELEY	6 Wedgwood Lane ST8 6RR	513002 07977 308043	elaine.baddeley@biddulph-tc.gov.uk	West
C BRADY	199 John Street ST8 6HP	07446 244432	connor.brady@biddulph-tc.gov.uk	East
JE DAVIES	69 Woodhouse Lane ST8 7EN	514478	james.davies@biddulph-tc.gov.uk	North
JIM GARVEY	394 New Street	07702 499279	jim.garvey@biddulph-tc.gov.uk	North
DA HALL	3 Mow Lane ST8 6QH	512626	tony.hall@biddulph-tc.gov.uk	North
AK HARPER	200 Congleton Road		ken.harper@biddulph-tc.gov.uk	North

	ST8 7SF			
AH HART	The Granary Woodhouse Farm Woodhouse Lane ST8 7RJ	379431	andrew.hart@biddulph-tc.gov.uk	North
DJ HAWLEY		07818 457381	dave.hawley@biddulph-tc.gov.uk	Moor
KJ JACKSON	110 Church Close ST8 6NA	515295	kevin.jackson@biddulph-tc.gov.uk	East
A LAWTON	3 Mason Drive, Biddulph, Stoke-on-Trent, ST8 6SP	07484 281 286 (Text Message Only)	adrian.lawton@biddulph-tc.gov.uk	South
JT JONES	348 New Street Biddulph Moor	516948 07747 775203	john.jones@biddulph-tc.gov.uk	Moor

	ST8 7NQ			
AJ McLOUGHLIN			alistair.mcLoughlin@biddulph-tc.gov.uk	West
CR PERKIN	8 Ruthin Grove ST8 7XL		chris.perkin@biddulph-tc.gov.uk	East
JP REDFERN	141 Park Lane ST8 7PN	511969	john.redfern@biddulph-tc.gov.uk	South
W ROGERS	Hillview 64 Well Lane ST8 6QR	519767	wayne.rogers@biddulph-tc.gov.uk	West
ES RUSHTON	22 Lawton Street ST8 6EQ	519896	sylvia.rushton@biddulph-tc.gov.uk	East
JT SALT	50 John Street ST8 6AT	07949 419 647	jill.salt@biddulph-tc.gov.uk	East

HM SHELDON MBE	Keepers Cottage Greenway Bank ST8 7QX	514993	hilda.sheldon@biddulph-tc.gov.uk	West
CM SMITH		07837 958096	charlotte.smith@biddulph-tc.gov.uk	East
GG SWIFT	11 Henley Avenue ST8 6NX	514432	graham.swift@biddulph-tc.gov.uk	West
NR YATES	2 Chepstow Close ST8 6UE	07733 076519	nigel.yates@biddulph-tc.gov.uk	West